

ALL COPY RIGHTS ARE THE SOLE PROPERTY OF HOMESTEAD DESIGNS

Homestead Designs
 Plano, TEXAS
 214-215-1013
 e-mail: homestead.designs@verizon.net



REVISION DATE
 05-18-2019 BLP
 KAMINSKI
 TOWNHOME

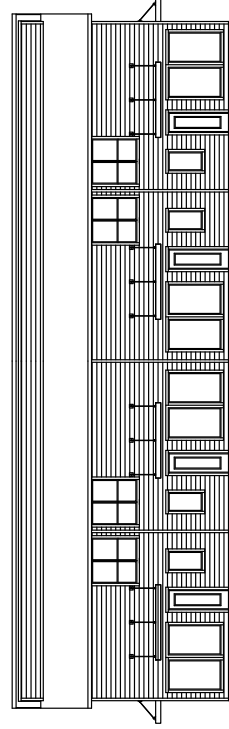
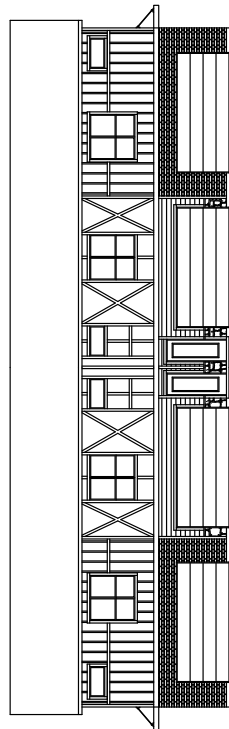
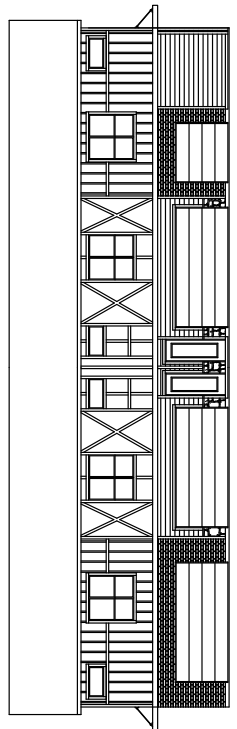
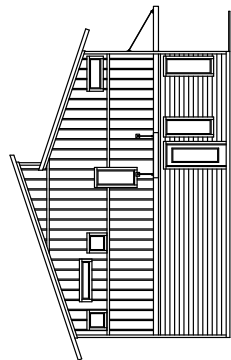
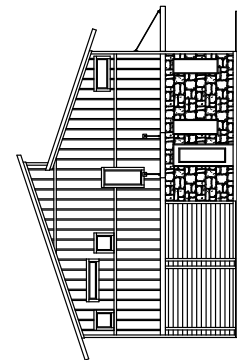
PROJECT ADDRESS:
 2112-2116
 SHEA ROAD
 DALLAS, TX.

PLAN NUMBER
 TOWN HOME
 1242

DESIGNED AND DRAWN BY:
 HOMESTEAD
 DESIGNS
 B.J. PHILLIPS
 FOUNDER-
 DESIGNER
 214-215-1013

SCALE:
 1/4"=1'-0" (FLOOR SHEET)

COVER # 1



IRIS-1 Window opening: Windows in Group B-2 and B-3 are required to be protected by fire-rated assemblies. The fire-rated assembly shall be tested in accordance with ASTM E 119 and shall be labeled for the intended use. The fire-rated assembly shall be installed in accordance with the manufacturer's instructions. The fire-rated assembly shall be tested in accordance with ASTM E 119 and shall be labeled for the intended use. The fire-rated assembly shall be installed in accordance with the manufacturer's instructions. The fire-rated assembly shall be tested in accordance with ASTM E 119 and shall be labeled for the intended use. The fire-rated assembly shall be installed in accordance with the manufacturer's instructions.

IRIS-2 Window opening: Windows in Group B-2 and B-3 are required to be protected by fire-rated assemblies. The fire-rated assembly shall be tested in accordance with ASTM E 119 and shall be labeled for the intended use. The fire-rated assembly shall be installed in accordance with the manufacturer's instructions. The fire-rated assembly shall be tested in accordance with ASTM E 119 and shall be labeled for the intended use. The fire-rated assembly shall be installed in accordance with the manufacturer's instructions. The fire-rated assembly shall be tested in accordance with ASTM E 119 and shall be labeled for the intended use. The fire-rated assembly shall be installed in accordance with the manufacturer's instructions.

IRIS-3 Window opening: Windows in Group B-2 and B-3 are required to be protected by fire-rated assemblies. The fire-rated assembly shall be tested in accordance with ASTM E 119 and shall be labeled for the intended use. The fire-rated assembly shall be installed in accordance with the manufacturer's instructions. The fire-rated assembly shall be tested in accordance with ASTM E 119 and shall be labeled for the intended use. The fire-rated assembly shall be installed in accordance with the manufacturer's instructions. The fire-rated assembly shall be tested in accordance with ASTM E 119 and shall be labeled for the intended use. The fire-rated assembly shall be installed in accordance with the manufacturer's instructions.

IRIS-4 Window opening: Windows in Group B-2 and B-3 are required to be protected by fire-rated assemblies. The fire-rated assembly shall be tested in accordance with ASTM E 119 and shall be labeled for the intended use. The fire-rated assembly shall be installed in accordance with the manufacturer's instructions. The fire-rated assembly shall be tested in accordance with ASTM E 119 and shall be labeled for the intended use. The fire-rated assembly shall be installed in accordance with the manufacturer's instructions. The fire-rated assembly shall be tested in accordance with ASTM E 119 and shall be labeled for the intended use. The fire-rated assembly shall be installed in accordance with the manufacturer's instructions.

**5-B CONSTRUCTION TYPE
 R-2 FIRE WALL CONSTRUCTION**